
STRATA KITCHENS

LOOKBOOK/
TWO-THOUSAND
& TEN/2010/



ABOUT STRATA

Strata Kitchens brings together a range of quality kitchens, which can be mixed and matched, giving you the freedom to create your dream kitchen.

Our range of modern, contemporary and traditional kitchens is extensive and there are designs to suit almost all of your creative needs and a range of budgets.

The range is built using Australian made cabinetry¹, coupled with Hafele European hardware. Strata Kitchens offers you a higher specification as standard, and because of our low cost business model and the fact we choose to work off lower margins, our high quality flat pack kitchen cabinets can be supplied to you at a price lower than other major retailers charge.

We pack our high quality cabinets at our large, purpose-built facility in Victoria and deliver to developers, trade and retail customers across Australia. What's more—our kitchen cabinets, including doors, bench tops and fittings, come with a 7 year guarantee, to give you total peace of mind.

Strata Kitchens also offers a range of quality Italian appliances, sinks, taps and a large range of accessories to complement your kitchen.

For more information on Strata Kitchens, visit our website at www.stratakitchens.com.au or feel free to contact our customer service team on 1800 28 26 24.

THE STRATA DIFFERENCE

AUSTRALIAN MADE CABINETS¹

2MM PVC EDGED CABINETS

EUROPEAN HÄFELE HARDWARE

7 YEAR GUARANTEE

METAL SIDED DRAWERS

FREE HOME DELIVERY²

¹ Excluding doors

² Refer to our delivery information online at: www.stratakitchens.com.au

STRATA KITCHENS

LOOKBOOK/ TWO-THOUSAND & TEN/2010/

LOFT

BIANCO

MOCHA-OAK



LOFT

The Loft range from Strata Kitchens allows you to take control of your own kitchen design. The smooth, satin off-white finish can be teamed with either light or dark colours for the perfect, yet simple, style statement.

Here we have combined Loft cabinets with the dark gloss Ebony Quartz benchtop, creating a timeless look exuding European class.

This particular kitchen design incorporates the Milano 900mm Freestanding Oven and utilises an island benchtop, meaning whether cooking for one or partying with friends, this kitchen is equipped to handle the situation.

\$3664*

BENCHTOP/

EBONY QUARTZ (GLOSS)

DOORS/FRONTS/PANELS/

LOFT (PVC)

SPLASHBACK/

MUSHROOM COLOURED GLASS

APPLIANCES/

900MM MILANO F/STANDING OVEN

900MM MILANO SS CANOPY

HANDLES/

SATIN BOW HANDLE 156MM x 30MM



BIANCO

The Bianco range from Strata Kitchens provides the perfect balance of minimalist harmony and simplicity. Finished with a premium high gloss and seamless pencil rounded edges, the Bianco range creates a bold statement in minimalist style. Blend or contrast colours to create your perfect individual space.

This straight-line design provides a simple, yet functional kitchen and covers all bases.

\$3282*

BENCHTOP/

MOCHA TERRAZZO (LAMINATE)

DOORS/FRONT/PANELS/

LOFT (PVC)

SPLASHBACK/

WHITE COLOURED GLASS

APPLIANCES/

600MM MILANO SS F/FORCED OVEN

600MM MILANO SS GAS COOKTOP

600MM MILANO SS SLIDEOUT R/HOOD

HANDLES/

SQUARE HANDLE 170MM x 35MM

SQUARE HANDLE 458MM x 35MM





MOCHA OAK

The Mocha Oak range from Strata Kitchens brings contemporary design to your kitchen. The dark-chocolate timbergrain can be combined with lighter colours creating an urban chic kitchen, whatever your taste. Create the perfect atmosphere in your home with the Mocha Oak range.

Here we have teamed Mocha Oak cabinets with feature frosted glass aluminium framed doors and matching aluminium-look kickboards transforming it into a flexible cooking/entertaining environment, suited for any occasion.

\$3990*

BENCHTOP/

STONE BIANCO (LAMINATE)

DOORS/FRONT/PANELS/

MOCHA OAK (PVC)

ALUMINIUM (PVC) KICKBOARDS

ALUMINIUM FRAMED GLASS DOORS

SPLASHBACK/

WHITE COLOURED GLASS

900MM STAINLESS STEEL PANEL

APPLIANCES/

900MM BASSANO F/STANDING OVEN

900MM MILANO SS CANOPY

HANDLES/

SQUARE HANDLE T-BAR 188MM x 35MM

SQUARE HANDLE T-BAR 412MM x 35MM

APPLIANCES

Our stylish range of Milano stainless steel appliances have been designed to complement your dream kitchen.

The Milano range of ovens and cooktops are manufactured in the Italian town of Bassano del Grappa and offer the very best of Italian cooking. There is also a 2 year Nation-wide warranty on all Milano ovens, cooktops and rangehoods for your peace of mind.

Better yet, Strata Kitchens offers the Milano range at Internet prices and delivered directly to your front door. View the full range online.



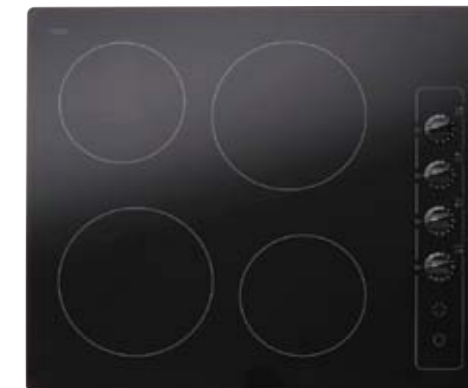
60CM S/S GAS COOKTOP
 UNDER KNOB IGNITION
 ENAMEL TRIVETS
 SINGLE PIECE SS MOULDING



60CM ELECTRIC COOKTOP
 RESIDUAL HEAT INDICATORS
 SINGLE PIECE SS MOULDING



90CM S/S GAS COOKTOP
 5 BURNERS
 CAST IRON TRIVETS
 SINGLE PIECE SS MOULDING



60CM FRAMELESS CERAN COOKTOP
 4 RIBBON ELEMENT DRIVE HEAT ZONES
 FRAMELESS SQUARE EDGE
 RESIDUAL HEAT INDICATORS



90CM S/S FREESTANDING OVEN
 MARK FREE STAINLESS STEEL
 CHILD SAFE COOL-TOUCH DOOR
 5 BURNER-CAST IRON TRIVETS
 UNDER KNOB IGNITION



60CM S/S FAN FORCED OVEN
 MARK FREE STAINLESS STEEL
 61L CAPACITY
 CHILD SAFE COOL-TOUCH DOOR
 4 COOKING FUNCTIONS



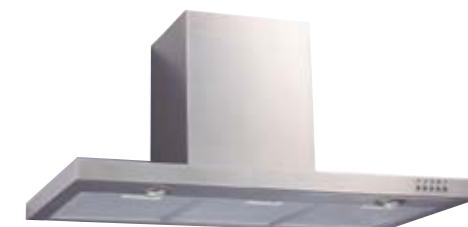
60CM DOUBLE WALL OVEN
 MARK FREE STAINLESS STEEL
 CHILD SAFE COOL-TOUCH DOOR
 PROGRAMMABLE DIGITAL CLOCK
 10 COOKING FUNCTIONS



60CM S/S SLIDEOUT RANGEHOOD
 250M /HR AIR MOVEMENT
 TWIN INCANDESCENT LIGHTS
 DISHWASHER SAFE FILTERS
 3 SPEED SETTINGS



60CM S/S CANOPY RANGEHOOD
 520M /HR AIR MOVEMENT
 TWIN HALOGEN LIGHTS
 DISHWASHER SAFE FILTERS
 3 SPEED SETTINGS



90CM S/S BOX CANOPY
 520M /HR AIR MOVEMENT
 TWIN HALOGEN LIGHTS
 DISHWASHER SAFE FILTERS
 3 SPEED SETTINGS



90CM S/S CANOPY RANGEHOOD
 520M /HR AIR MOVEMENT
 TWIN HALOGEN LIGHTS
 DISHWASHER SAFE FILTERS
 3 SPEED SETTINGS



90CM S/S FLAT GLASS CANOPY
 520M /HR AIR MOVEMENT
 TWIN HALOGEN LIGHTS
 DISHWASHER SAFE FILTERS
 3 SPEED SETTINGS



90CM S/S CURVED GLASS CANOPY
 520M /HR AIR MOVEMENT
 TWIN HALOGEN LIGHTS
 DISHWASHER SAFE FILTERS



ACCESSORIES

To complement the Strata Kitchens range, we have selected a range of quality European accessories to complete any kitchen look and add functionality. From cutlery inserts and anti-slip drawer inserts to pullout bins and lighting, the possibilities are endless.

For the full range of accessories, visit the Strata Kitchens website at www.stratakitchens.com.au and select 'The Range' and then 'Accessories'. All available to order online and delivered to your home.

READY TO START PLANNING

Want to turn your ideas and dreams into a clear plan of action? Then use the tools and advice you'll find in our Planning & Design Guide to get off to a great start!

Our easy to follow guide covers all aspects of planning and designing your kitchen, including:

- Where to start when planning?
- The various kitchen layouts and their benefits
- The Do's and Don'ts of kitchen planning
- Where to use panels and fillers
- And our price list

Also included is a printable kitchen design grid together with cut-out cabinets allowing you to create (and recreate) your dream kitchen.

Download a copy online at www.stratakitchens.com.au today!



LOOKBOOK/ TWENTY-TEN/

What's included in the price for the Loft design shown?

450mm pantry x 1, 450mm base cabinet x 1, 900mm corner base cabinet x 2, 900mm base cabinet x 1, 450mm wall cabinet x 1, 900mm wall cabinet x 1, 450mm drawer unit x 1, 900mm drawer unit x 1, base end panel x 3, wall end panel x 2, pantry end panel x 2, 2400mm kickboard x 3, 2400x900mm Ebony Marble b/top x 1, 2400x600mm Ebony Marble b/top, 1200x600mm Ebony Marble b/top x 1, and all doors and drawer fronts to suit.



LOFT

What's included in the price for the Bianco design shown?

450mm pantry x 1, 450mm wall cabinet x 2, 900mm base cabinet x 1, 450mm base cabinet x 1, 900mm fridge overhead cabinet x 1, 900mm wall cabinet x 2, 600mm oven cabinet x 1, 600mm rangehood cabinet x 1, 450mm drawer unit x 1, 900mm drawer unit x 1, pantry end panel x 4, 2400mm kickboard x 2, 2400 x 600mm Mocha Terrazzo b/top x 1, 2400 x 1200mm Mocha Terrazzo b/top x 1, and all doors and drawer fronts to suit.



BIANCO

What's included in the price for the Mocha Oak design shown?

450mm pantry x 2, 900mm base cabinet x 1, 900mm wall cabinet x 2, 450mm drawer unit x 1, 900mm drawer unit x 2, pantry end panel x 4, base end panel x 5, island back panel x 1, wall end panel x 2, 2400mm aluminium kickboard x 2, 2400 x 900mm Stone Bianco b/top x 1, 2400 x 600mm Stone Bianco b/top x 1, and all doors and drawer fronts to suit.



MOCHA OAK

*Price includes all cabinetry, cabinetry hardware, drawer units, doors, drawer fronts, panels and benchtops. Prince excludes all handles, appliances, splashbacks and accessories.



BY EMAIL/

DESIGN ENQUIRIES/

DESIGN@STRATAKITCHENS.COM.AU

SALES ENQUIRIES/

SALES@STRATAKITCHENS.COM.AU

BY POST/

PO BOX 5152

FRANKSTON SOUTH

VICTORIA, AUSTRALIA 3199

BY TELEPHONE/

FREECALL 1800 28 26 24

BY FACSIMILE/

FREEFAX 1800 77 87 74

OFFICE HOURS/

MON-FRI 9AM-5PM EST

SAT 10AM-1PM EST
